

SCENIC LOOP 138 kV
TRANSMISSION LINE
AND SUBSTATION
PROJECT
PRELIMINARY ALTERNATIVE SEGMENTS
AND SUBSTATIONS
WITH ENVIRONMENTAL CONSTRAINTS

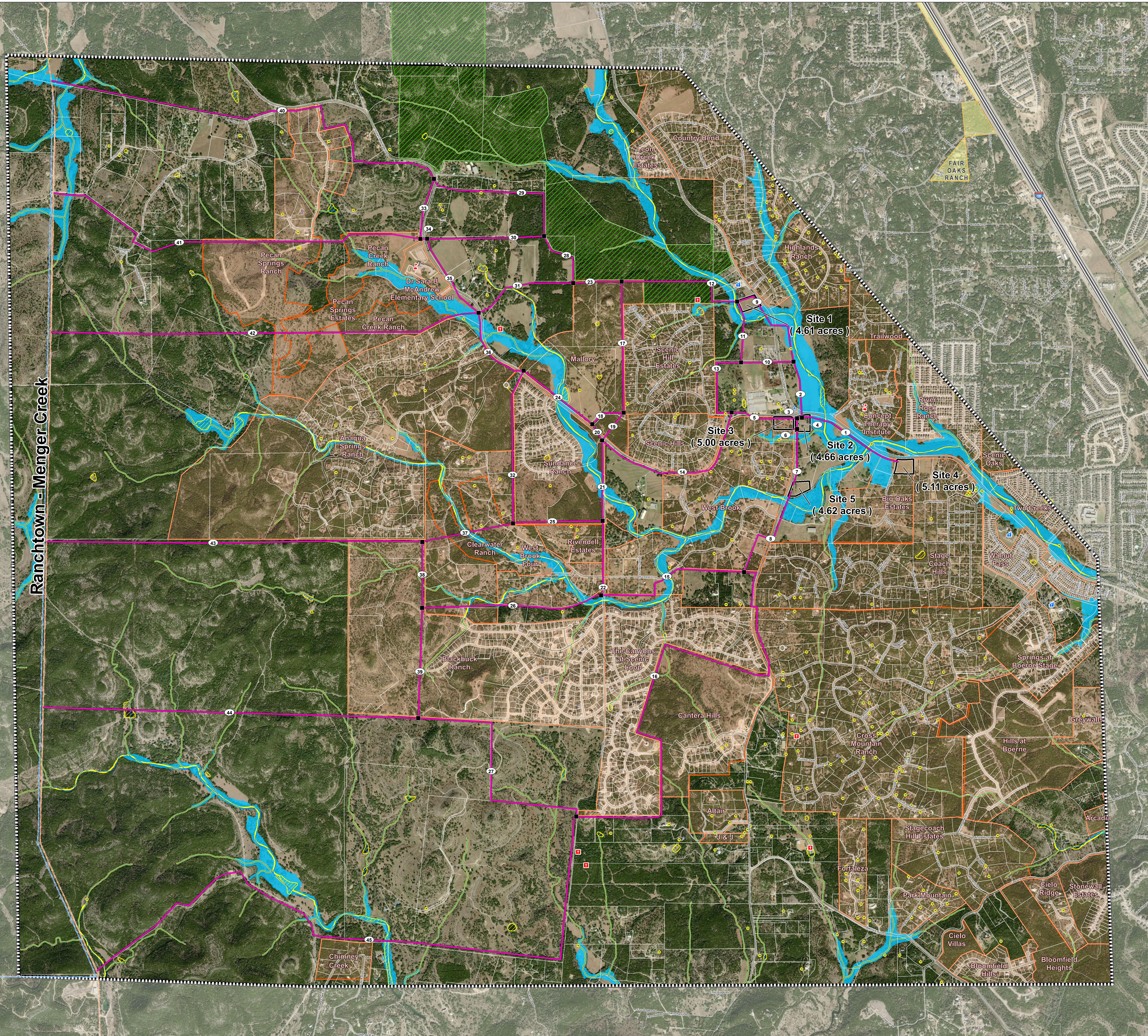
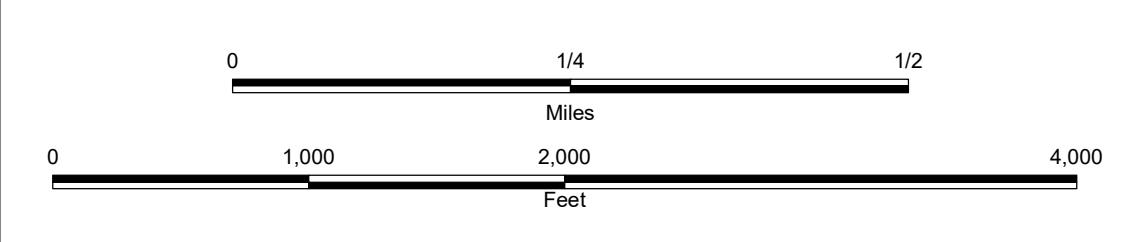
- Project Features**
- Study Area Boundary
 - Proposed Substation Site
 - Proposed Segment and Node
- Existing Utility Feature**
- Communication Tower
 - 138 kV Transmission Line
 - 345 kV Transmission Line
- Administrative Boundaries**
- Parcel Boundary
 - City Boundary
- Transportation**
- Interstate Highway
 - Local Road
- Land Use Features**
- Cemetery
 - Church
 - School
 - Official Texas Historical Marker
 - Water Well
 - Neighborhood
 - Conservation Easement
- Surface Waters**
- Stream
 - 100 Year Floodplain
 - Wetland

Aerial Imagery: DigitalGlobe 2019, 0.5 Meter

Some data layers including pipelines, roads, and oil/gas pipelines obtained from third-party sources may be inaccurate to varying degrees. These data layers have not been corrected in all locations and should be used as a general guide to feature locations only. Digitization of proposed transmission line segments was performed based on aerial interpretation of these features.

Some legend symbols are enlarged for easier identification.

Some features are exaggerated to better identify paralleling opportunities.



Ranchtown - Menger Creek